

*Note: This is an abridged version of GreyMatter concrete Introduction to Fair Faced Architectural concrete work. The full version is available as a CPD/Seminar delivered in your offices. GreyMatter concrete also has a CPD specifically designed for Architectural Fair Faced Concrete Repairs.*

*To book a CPD or seminar please contact GreyMatter concrete by email.*

[info@greymatterconcrete.co.uk](mailto:info@greymatterconcrete.co.uk)

## INTRODUCTION TO FAIR FACED ARCHITECTURAL CONCRETE

### CONTENTS

- Architectural fair faced concrete examples.
- Overview of a concrete mix
- Introduction to popular formwork facing materials.
- Formwork considerations.
- Placing and finishing concrete. An example project.
- Some things to look out for.
- Examples of Architectural concrete repair.
- Beauty or beast?

## ARCHITECTURAL FAIR FACED CONCRETE EXAMPLES



Board Marked Finish. With in situ polished and ground Flatwork. By Architecture Republic.  
Photo by Paul Tierney



Board Marked Finish. Reckli Formliner.



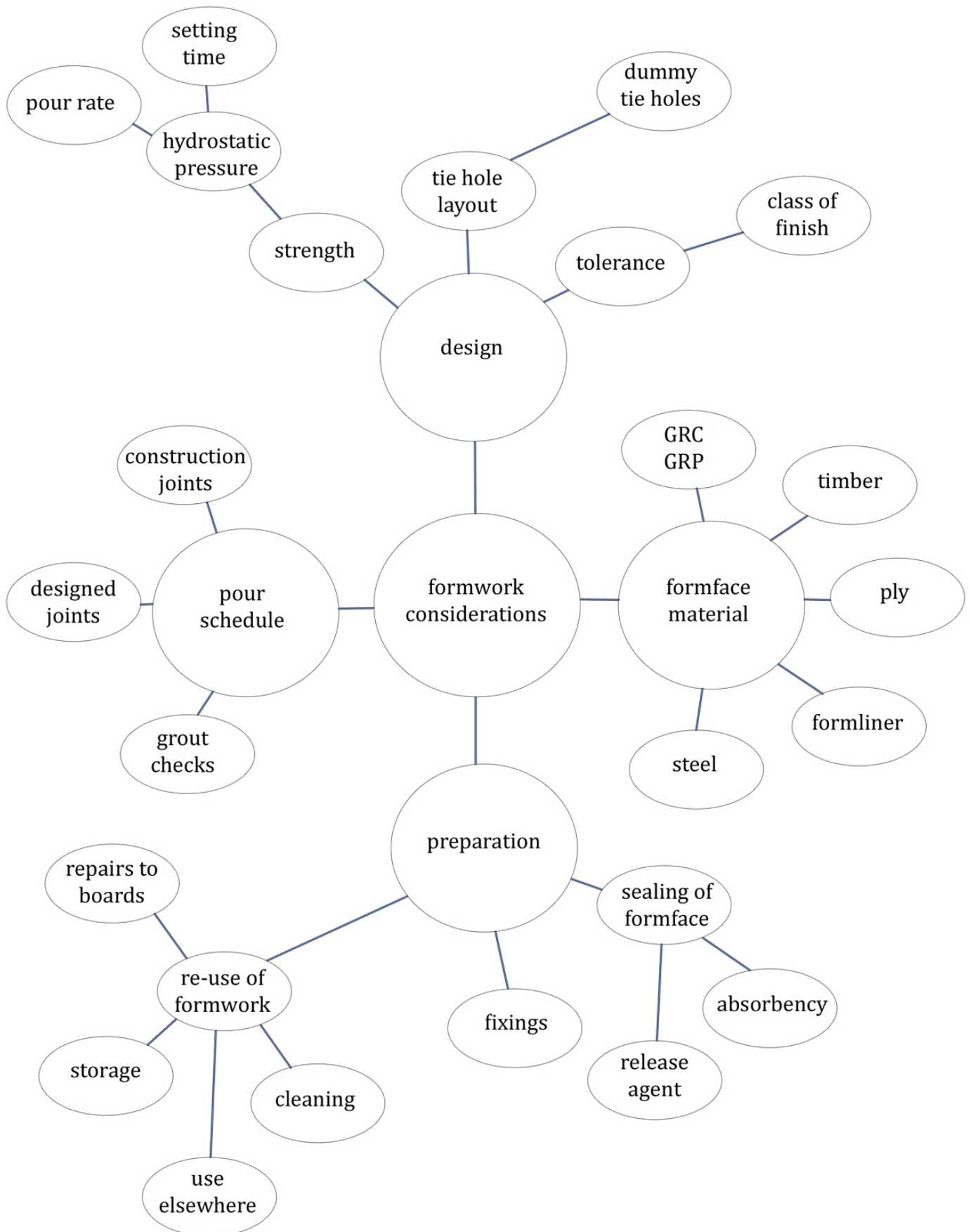


Integral Pigmentation (Lanxess). Ciudad De La Justicia de Barcelona. b720 Architects (Fermin Vasquez Architects) in collaboration with David Chipperfield Architects.



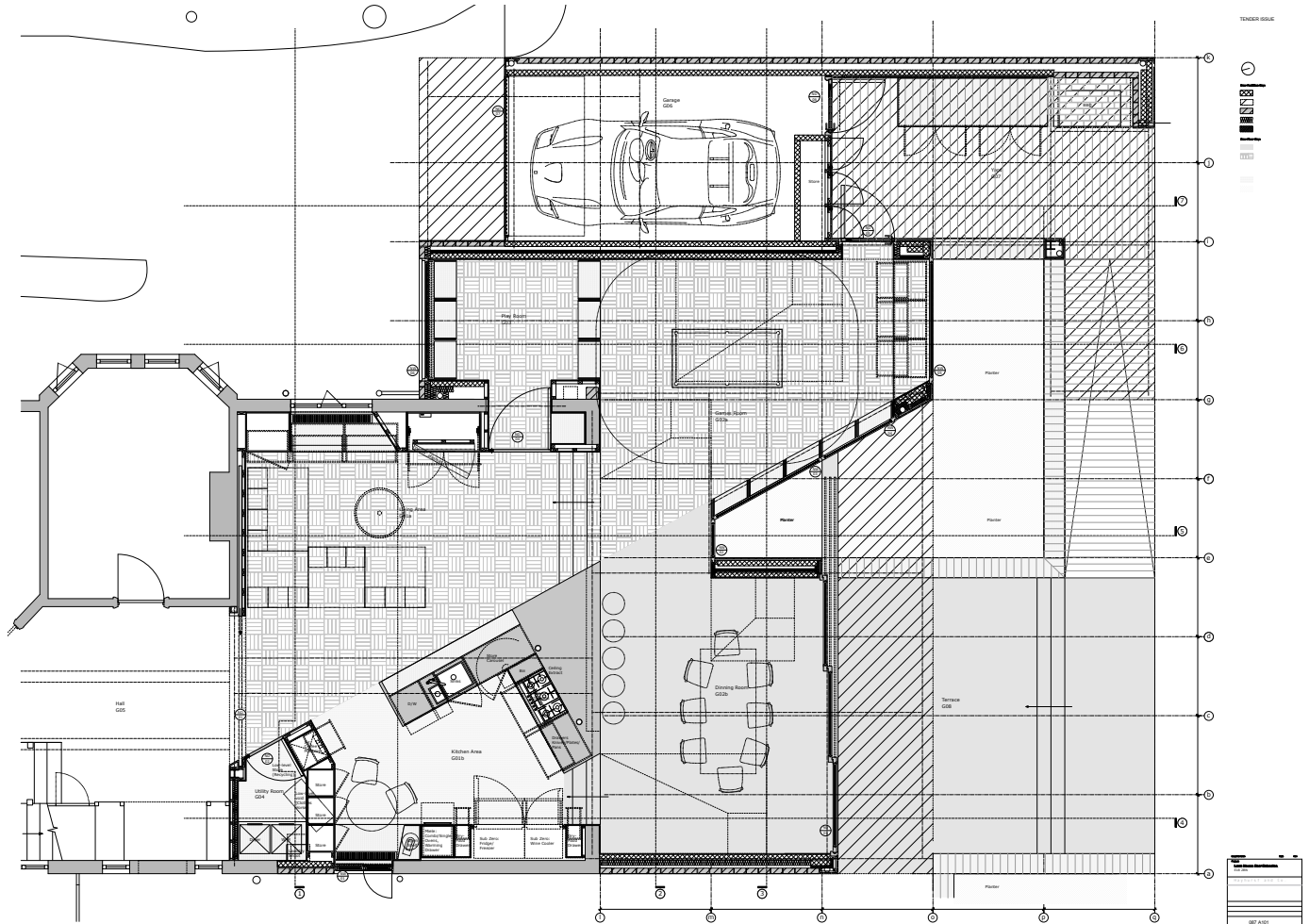
Mechanical intervention of a cast surface. The curved grid lines were cut into the surface and the exposed aggregates grit blasted. Visiting Artists House, California. Jim Jennings Architecture.

# FORMWORK CONSIDERATIONS



# PLACING AND FINISHING CONCRETE: AN EXAMPLE

Images and project details courtesy of white+reid ltd.  
Designed by Hayhurst and Co. Architects



## Brief:

To create a seamless in-situ polished concrete countertop with a sloped drainer section and two knockouts for an undermounted sink and hob unit to the proposed design. The counter will seamlessly return to the floor through 3x polished concrete treads. The countertop will have an internal thickness of 65mm incorporating a drop down edge of 150mm. The material is to be OPC grey and hand finished.

Two in-situ power trowelled polished concrete floors will be installed running internally and externally incorporating 3x flush finish stainless steel guides for top hung sliding doors. The external concrete will have a 1 in 80 fall away from the property into a bespoke stainless steel drain cast into the slab. The concrete will then further extend to external steps of 4 treads measuring 5600mm width. All concrete is to be a natural OPC grey finish. The floors will be 100mm thick and reinforced with A252 mesh.























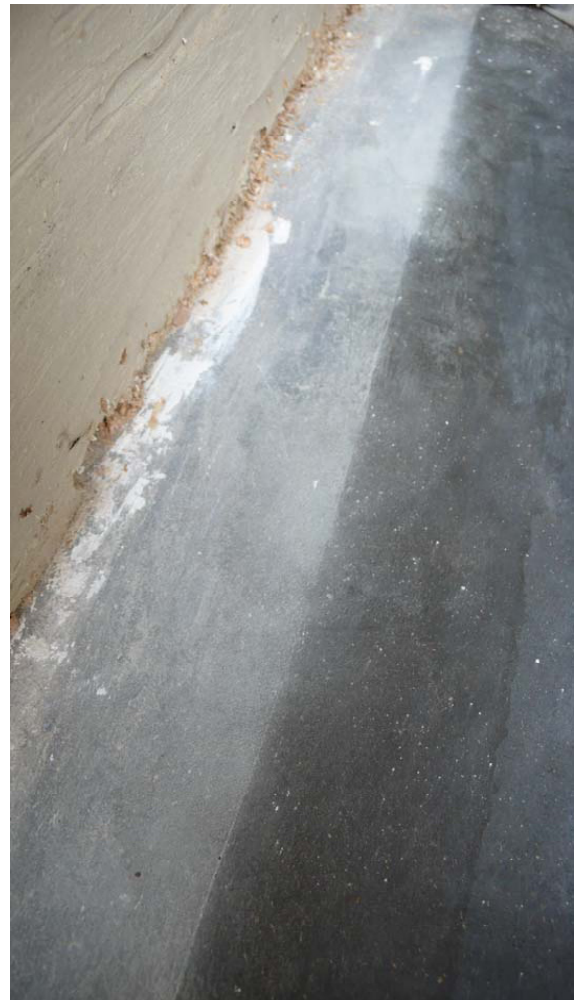
## SOME THINGS TO LOOK OUT FOR



Orange marks from plastic sheeting. Flatwork is especially prone to this. Plastic sheeting can create white marks even after just a few hours. These may never disappear and can turn orange as in the example above.



These images above shows a darkened floor section to the left hand side where the power trowel has over burnished the surface. The lighter area is the lower floor section (stepped down) and again shows the orange hue. To the right plastic sheeting has created differential curing of the slab.





## ARCHITECTURAL CONCRETE REPAIR



Honeycombing occurs on a regular basis especially where compacting into tight corners is concerned. Congested reinforcement also causes aggregate bridging compounding the issue.